

# WARREN

The Putney Estate Agent

## PUTNEY HILL, SW15

Approx. gross internal area 368 Sq Ft. / 34.2 Sq M

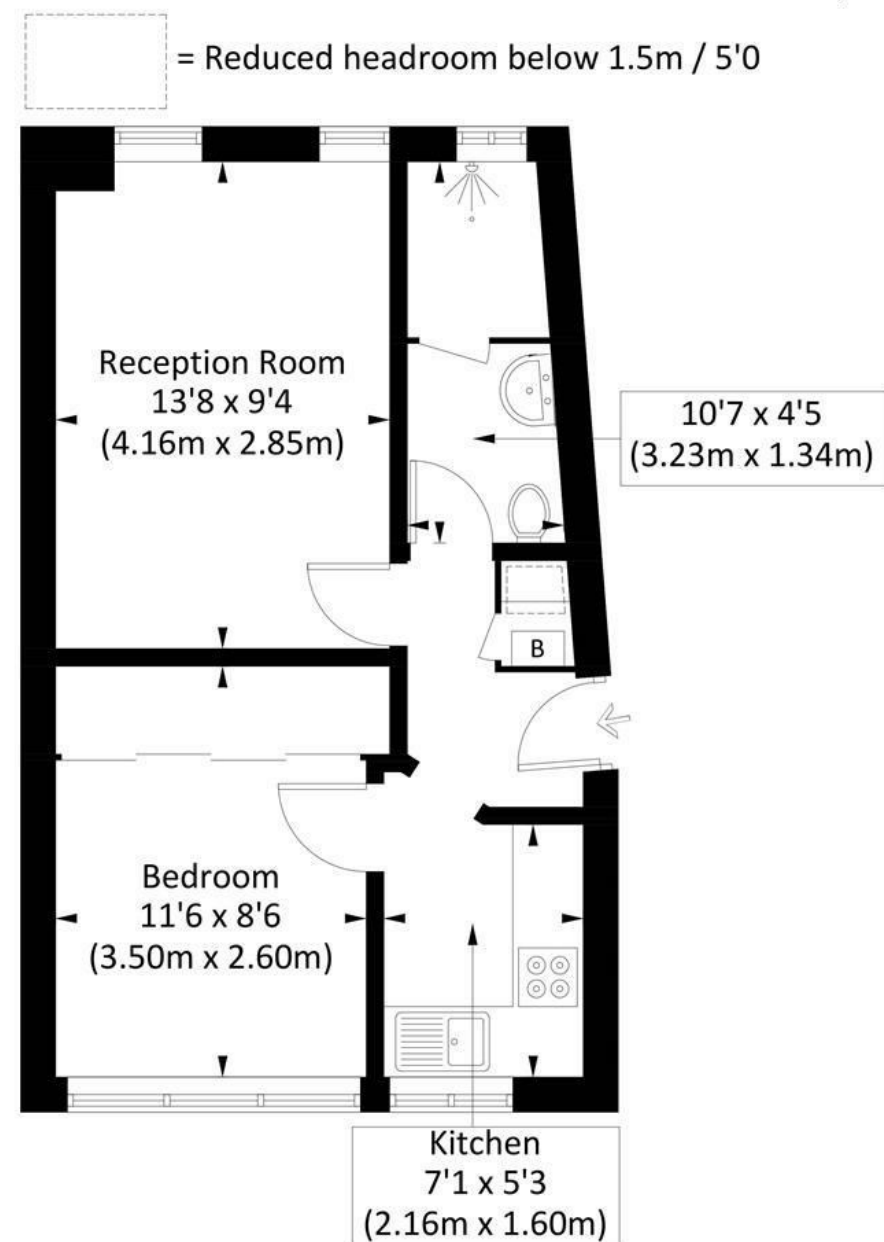


Illustration for identification purposes only, measurements are approximate, not to scale. Fourlabs.co © 2026 (ID1265909)

DISCLAIMER•These particulars are intended to give a fair and substantially correct overall description for the guidance of intending purchasers and do not constitute an offer or part of a contract. Prospective purchasers and/or lessees ought to seek their own professional advice.

•All descriptions, dimensions, areas, references to condition and necessary permissions for use and occupation and other details are given in good faith and are believed to be correct, but any intending purchasers should not rely on them as statements or representations of fact, but must satisfy themselves by inspection or otherwise as to the correctness of each of them.

•All measurements are approximate.



194 Upper Richmond Road, London SW15 2SH Also at: 139 Lower Richmond Road, London SW15 1EZ

E: [sales@warrenputney.co.uk](mailto:sales@warrenputney.co.uk) T: 020 8780 1100 F: 020 8780 0872

# WARREN

The Putney Estate Agent

## Putney Hill, Putney, SW15

A newly renovated one bedroom flat on the ground floor of this imposing period house in central Putney. Offered on an unfurnished basis and benefiting from off-street parking and a well maintained communal garden, the accommodation comprises an entrance hallway, bright reception room, a brand new kitchen, double bedroom and new installed shower room. This superb flat is located within a very short walk of Putney High Street.

Available now.



- ONE BEDROOM FLAT
- BRAND NEW KITCHEN
- BRAND NEW SHOWER ROOM
- OFF-STREET PARKING
- EPC D
- RECEPTION ROOM
- DOUBLE BEDROOM
- COMMUNAL GARDEN
- CLOSE TO HIGH STREET
- COUNCIL TAX BAND C

Per Calendar Month  
**£1,600 Per Calendar Month**

E: [sales@warrenputney.co.uk](mailto:sales@warrenputney.co.uk)

T: 020 8780 1100 F: 020 8780 0872

[warrenputney.co.uk](http://warrenputney.co.uk)



